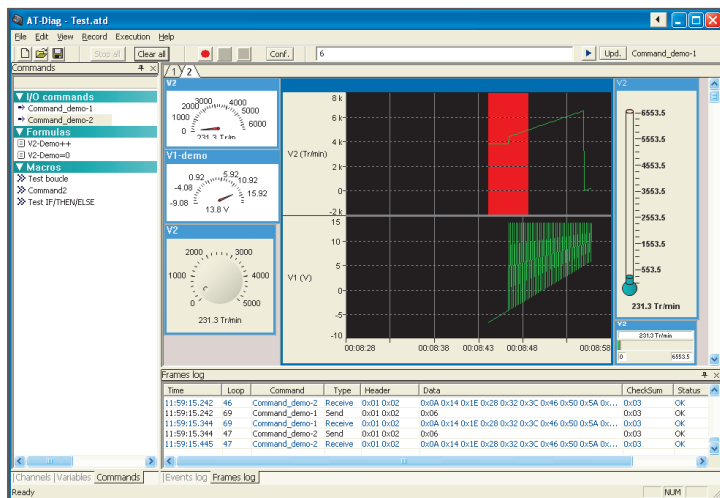


AT-DIAG

Multi-protocol software for On-Board Calculator Analysis

n e x i o group
electromagnetism is our thing



AT-DIAG

An on-board calculator control tool for communication line acquisition & surveillance.

AT-DIAG establishes bidirectional communication and deals with real time data acquisition, visualization and analysis. Its goal is to inform external systems about EUT defaults.

It has been developed since 1990 by a team ensuring expert design, development and technical support.

POWER - ERGONOMICS

Dynamic set up: During a simple frame reading, users can define elements to be acquired, recorded, visualized and surveyed in real time.

Macro-command: Users can write and execute complex test sequences thanks to macro-command functions.

Local & Distant Integration: AT-DIAG can be driven and interrogated by external software. It can also be used with a computer through ethernet.

COMMUNICATION

Communication ports: Communication is done through RS232, NI CAN acq. Card, specific acquisition card or system.

Protocols: FREERUNNING, KWP2000, CAN, LIN, FlexRay, ARINC, ... Possibility to implement new protocols (customized protocol, ...).

Multi-product & Multi-protocol Communication: Communication can be set up with multiple addresses and protocols during a single test.

PRODUCT LINES

Complete & modular

CEM

BAT-EMC: Modular EMC test automation software for Emission, Susceptibility, Reverberation chamber, Transient, EN55020, Radiation Patterns, Radio measurements and more.

CONTROL & MONITORING

EASY-Monitoring: A range of simple and cost-killer tools to control and monitor your equipment under test and do away with internal programming.

BAT-Image: Automatic EUT video surveillance (real time analysis & detection).

Easy-TTL: Module to drive an acquisition TTL card to activate outputs and check inputs.

